

**CHITKARA**  
UNIVERSITY



AIR QUALITY FORM

# Chitkara University, Punjab Campus

## Air Quality Audit

S.No.	AQI Measured	Calculations	Proofs
1.	Calculate the percentage of college inhabitants using public/green commuting practices  Points: 04	4000 (by bus) + 6000 (residing in hostel) Total = 14638 % = 36.6 %	List of students and staff members (teaching and non-teaching) commuting by college bus, public transport, bicycle, walking and private transport.  Google map showing bus stops/railway or metro station located within 500 m of walking distance from the college.

1) Total number of people in the University = 14638

Number of people using metro, bus, green transport = 4000 (college bus)

People coming by foot, on bicycle = 6000 (hostel residents)

People using personal cars, motorbikes, auto rickshaw and taxi services like OLA, UBER = 4638

College transport footprint =  $(10000-4638)/14638 = 36.6\%$



S. No.	AQI Measured	Calculations	Proofs
2.	<p>Calculate the parking percentage area in your college. If there is no parking, how are you managing the parking?</p> <p>Calculate the percentage of bicycle parking.</p> <p>Points: 02</p>		<p>Site plan showing the parking spaces provided for buses and cars.</p> <p>Photographs showing the Provided parking spaces.</p> <p>Calculation sheet for calculating percentage of parking area. Proof of any Alternative arrangements for parking space, if any.</p>

There are 6 different parking area on the campus namely:

- Chai chaska bar parking
- Turing parking
- Sub station parking
- Tesla parking
- Football ground parking
- Newton additional area parking

### Photographs of parking



Parking area showing the Turing block parking





Newton additional area parking



Chai chaska bar car Parking



Tesla Car Parking



Substation car Parking

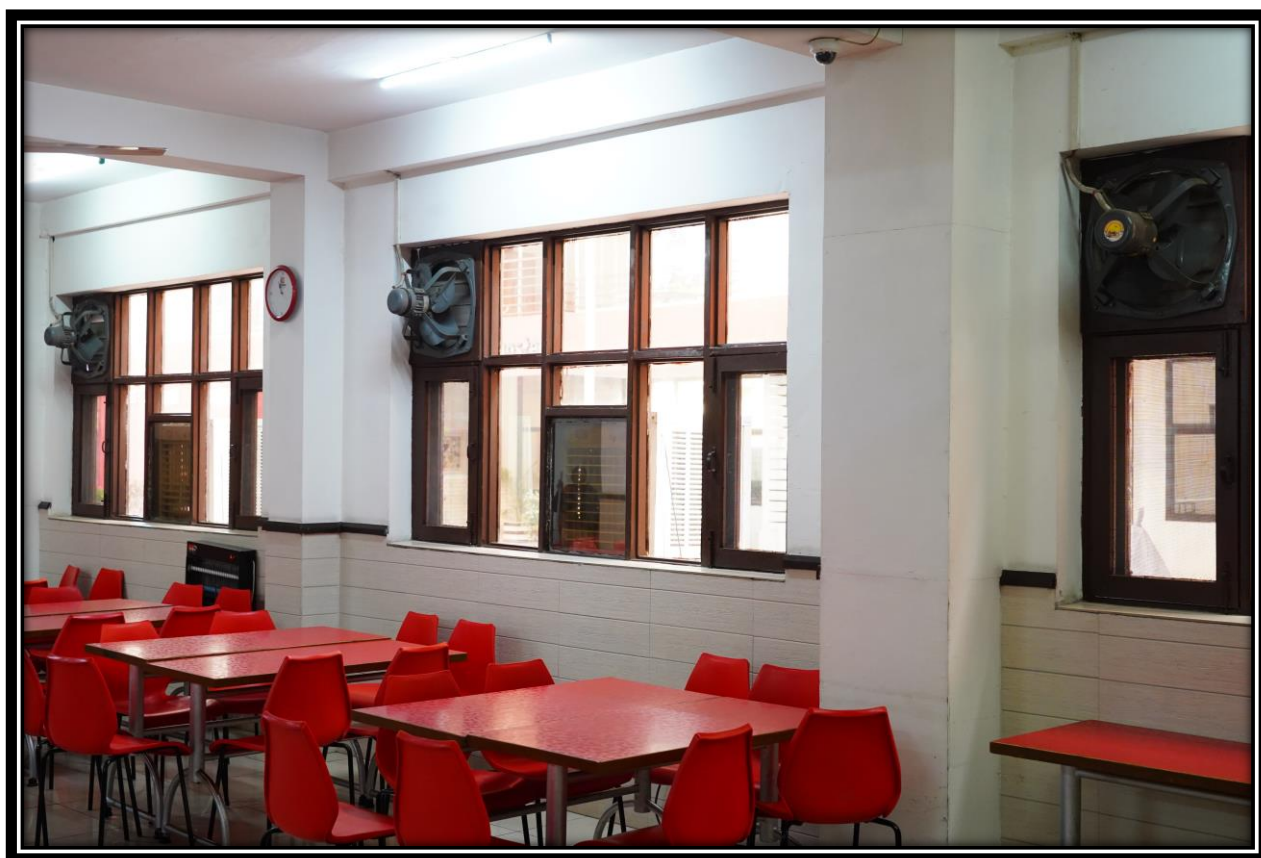




Football ground car parking

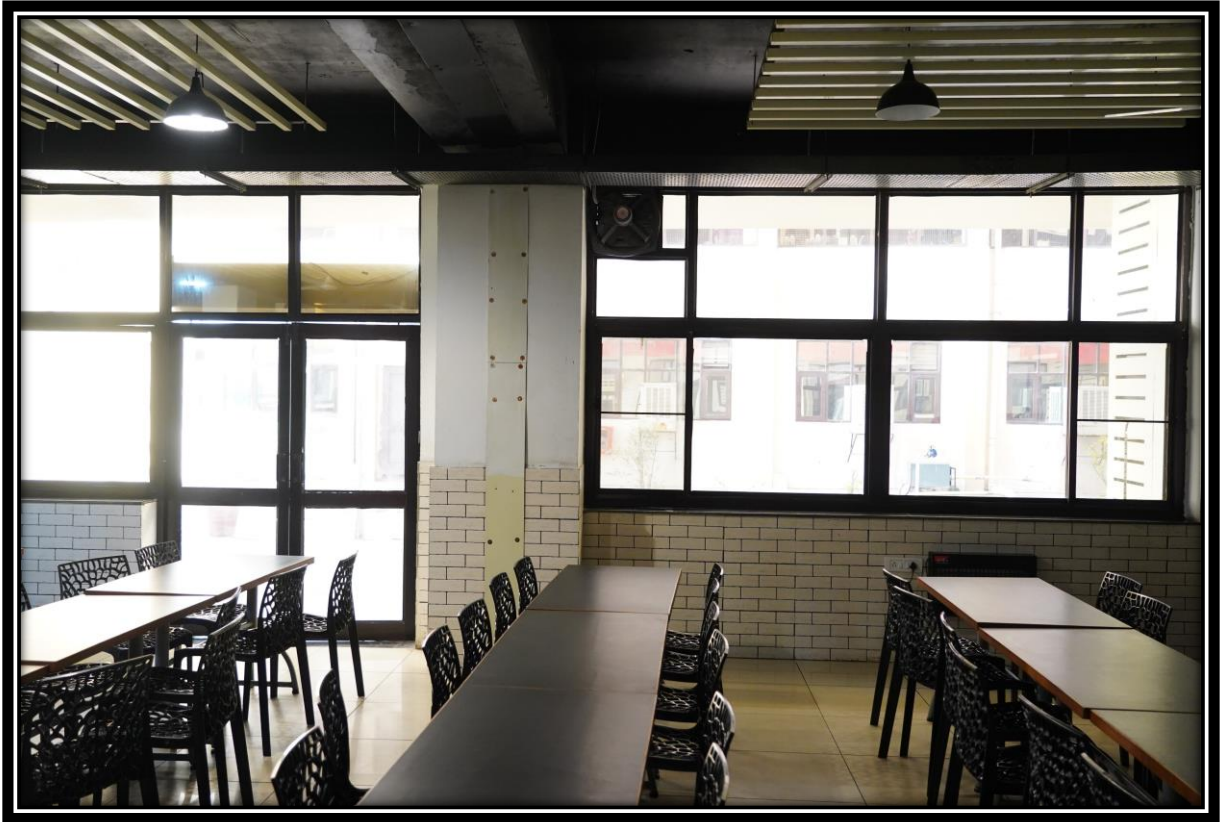
S. No.	AQI Measured	Calculations	Proofs
3.	<p>Provide adequately ventilated and daylit occupied spaces.</p> <ul style="list-style-type: none"> <li>• Calculate percentage of daylit and ventilated space in the college.</li> <li>• At least 50% of the regularly occupied spaces should meet the minimum illumination level/daylight factor.</li> <li>• Do you have exhaust facilities in all canteens, laboratories and washrooms? (Yes/No)</li> </ul> <p>Points: 03</p>	<p>Yes</p> <p>Yes</p> <p>Yes</p>	<ul style="list-style-type: none"> <li>- Calculation sheet demonstrating the percentage of ventilated and day lit area</li> <li>- Floor plans showing the opening and exhaust systems (if available)</li> <li>- List of regularly and non-occupied spaces</li> <li>- List the number of rooms used for canteen, laboratories and washrooms</li> <li>- Photograph of each showing exhaust facility</li> </ul>

### **Exhaust facilities in canteen/mess**









## Exhaust facilities in laboratories










Natural ventilation in the dry labs where there are no emissions

## Exhaust facilities in the washrooms



S. No.	Interview questions	Answers	Photos
1.	Do you have biennial, annual or perennial plants?	Yes	
2.	What do you do to the fallen dried leaves?	All the dried fallen leaves are collected and converted to manure	
3.	Do you know about the harmful effects of burning the leaves?	Yes. It leads to global warming, acid rain and various health issues such as respiratory diseases, lung diseases	
4.	Do you know about composting and mulching?	Yes	
5.	Do you practice composting of the dried leaves?	Yes	



S. No.	AQI Measured	Calculations	Proofs
4.	A) Is your Gardening staff burning the fallen leaves?  Points: 01	No	Video footage of the interview of your school gardener saying leaves are not burned by the school.
	B) • Do you use Dust free products indoors (chalk, duster)? (Yes/No)	Yes	List of green/dustfree/environment friendly products (paints, cleaning agents, etc.) used in the college, along with company name and photographs of the products. Photographs of the foot mats.
	• Does the college use green products (like paints with less VOC and other green cleaning products)? (Yes/No)	No	
	• Does the college have a foot mat at all entrances of the college? (Yes/No)	Yes	
	• Are Classrooms cleaned on daily basis? (Yes/No)  Points: 02	Yes	Narrative of daily cleaning practices.

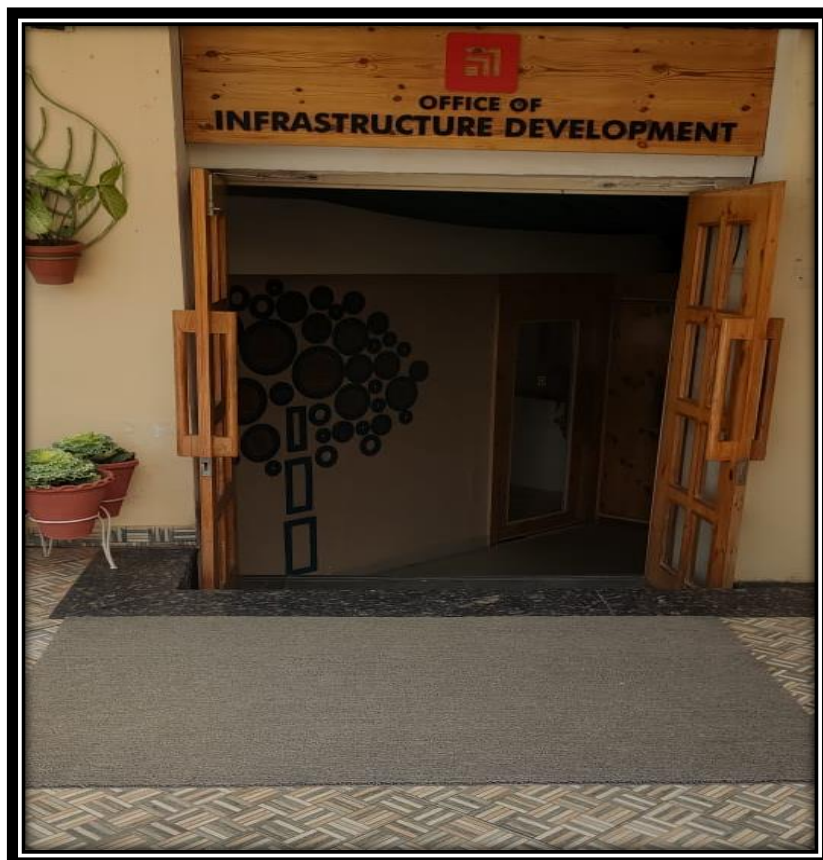
Pictures of foot mats at entrance of various facilities



Pictures of foot mat at the entrance of Tesla block



Footmat at the entrance of the office Registrar



Foot mat at the entrance of the office of Infrastructure Development